



Product Line Brochure



FAITH - VISION - WORK

"We engineer and build what you need." - Since 1927

Table of Contents: **Page:**

| | |
|--|----------------|
| • Pneumatic Tire | |
| • 24-in. Load Center | 2 - 5 |
| • 36-in. Load Center | 6 |
| • 48-in. Load Center | 7-8 |
| • Large Capacity | 9-10 |
| • Empty Container Handlers | 10-11 |
| • Loaded Container Handlers | 12 |
| • Reach Stackers | 13 |
| • Roll-On Roll-Off (RORO) | 13 |
| • Removable Counterweight | 14 |
| • Cushion Tire | 15 - 16 |
| • Log Stacker | 17 |
| • Specialty Trucks | 18 |
| • GT Series | 19 |
| • Wheel Loaders | 20 |
| • Taylor Leasing[®] | 21 |
| • Taylor Sudden Service, Inc.[®] | 22 |
| • Taylor Genuine OEM Parts | 23 |
| • Taylor Industrial Tires[®] | 24 |
| • Taylor Safety | 25 |
| • Vision Plus[®] | 26 |
| • TaylorTrak Pro[®] | 27 |
| • Taylor Defence Products | 28 |
| • Factory Store Locations | 29 |



Designed, Engineered & Built in the USA.

Backed by over 90 years of experience, Taylor Machine Works, Inc. has become a world-wide operation with sales driven by the professional and aggressive activities of a vast domestic dealer sales, direct sales, and international sales organization.

Taylor Machine Works designs, engineers, and manufactures industrial lift equipment with lift capacities from 6,000-lbs. to 125,000-lbs. Each machine built must pass stringent guidelines, insuring that our customers receive the best possible product.

At the very center of this success has been an unwavering commitment to the key concepts of **FAITH, VISION & WORK** by the members of the Taylor family and employees who collectively form **THE BIG RED TEAM!**

To find out more visit us at: www.taylorbigred.com



you
can
depend
on

Big Red®

“We engineer and build what you need.”

Founder of Taylor Machine Works, Inc.: W. A. Taylor, Sr.

PNEUMATIC TIRE: 24" Load Center



X-160 & 175

Rated Cap.: 16,000-lbs. (7,257 kg)
Rated Cap.: 17,500-lbs. (7,938 kg)
Load Center: 24-in. (610 mm)
Wheelbase: 104-in. (2,642 mm)



X-180S, 200S, 220S

X-180S Rated Cap.: 18,000-lbs. (8,165 kg)
X-200S Rated Cap.: 20,000-lbs. (9,072 kg)
X-220S Rated Cap.: 22,000-lbs. (9,979 kg)
Load Center: 24-in. (610 mm)
Wheelbase: 101-in. (2,565 mm)



X-250S

Rated Cap.: 25,000-lbs. (11,350 kg)
Load Center: 24-in. (610 mm)
Wheelbase: 110-in. (2,794 mm)



X-250M

Rated Cap.: 25,000-lbs. (11,350 kg)
Load Center: 24-in. (610 mm)
Wheelbase: 121-in. (3,073 mm)

PNEUMATIC TIRE: 24" Load Center



X-280S

Rated Cap.: 28,000-lbs. (12,701 kg)
Load Center: 24-in. (610 mm)
Wheelbase: 110-in. (2,794 mm)



X-280M

Rated Cap.: 28,000-lbs. (12,701 kg)
Load Center: 24-in. (610 mm)
Wheelbase: 121-in. (3,073 mm)



X-300S & 330S

X-300S Rated Cap.: 30,000-lbs. (13,608 kg)
X-330S Rated Cap.: 33,000-lbs. (14,969 kg)
Load Center: 24-in. (610 mm)
Wheelbase: 110-in. (2,794 mm)



X-300M & 330M

X-300M Rated Cap.: 30,000-lbs. (13,608 kg)
X-330M Rated Cap.: 33,000-lbs. (14,969 kg)
Load Center: 24-in. (610 mm)
Wheelbase: 121-in. (3,073 mm)

PNEUMATIC TIRE: 24" Load Center



X-330SL

Rated Cap.: 33,000-lbs. (14,980 kg)
Load Center: 24-in. (610 mm)
Wheelbase: 110-in. (2,794 mm)



X-360M

Rated Cap.: 36,000-lbs. (16,330 kg)
Load Center: 24-in. (610 mm)
Wheelbase: 121-in. (3,073 mm)



X-360L

Rated Cap.: 36,000-lbs. (16,330 kg)
Load Center: 24-in. (610 mm)
Wheelbase: 138-in. (3,505 mm)

BIG WHEEL: 24" Load Center



XB-180S & 200S

XB-180S Rated Cap.: 18,000-lbs. (8,165 kg)
XB-200S Rated Cap.: 20,000-lbs. (9,072 kg)
Load Center: 24-in. (610 mm)
Wheelbase: 110-in. (2,794 mm)



XB-250M

Rated Cap.: 25,000-lbs. (11,350 kg)
Load Center: 24-in. (610 mm)
Wheelbase: 121-in. (3,073 mm)



XB-300L & 360L

XB-300L Rated Cap.: 30,000-lbs. (13,608 kg)
XB-360L Rated Cap.: 36,000-lbs. (16,329 kg)
Load Center: 24-in. (610 mm)
Wheelbase: 140-in. (3,556 mm)

PNEUMATIC TIRE: 36" Load Center



XH-180 & HYDROSTATIC

Rated Cap.: 18,000-lbs. (15,876 kg)
Load Center: 36-in. (914 mm)
Wheelbase: 104-in. (6,642 mm)



X-400M & 450M

X-400M Rated Cap.: 40,000-lbs. (18,144 kg)
X-450M Rated Cap.: 45,000-lbs. (20,412 kg)
Load Center: 36-in. (914 mm)
Wheelbase: 156-in. (3,962 mm)



X-450S, 520S & 550S

X-450S Rated Cap.: 45,000-lbs. (20,412 kg)
X-520S Rated Cap.: 52,000-lbs. (23,587 kg)
X-550S Rated Cap.: 55,000-lbs. (24,948 kg)
Load Center: 36-in. (914 mm)
Wheelbase: 144-in. (3,658 mm)



X-650S

Rated Cap.: 65,000-lbs. (29,483 kg)
Load Center: 36-in. (914 mm)
Wheelbase: 164-in. (4,166 mm)

PNEUMATIC TIRE: 48" Load Center



XH-300L & 350L

Rated Cap.: 30,000-lbs. (13,608 kg)
Rated Cap.: 35,000-lbs. (15,876 kg)
Load Center: 48-in. (1,219 mm)
Wheelbase: 148-in. (3,759 mm)



XH-360L

Rated Cap.: 36,000-lbs. (16,329 kg)
Load Center: 48-in. (1,219 mm)
Wheelbase: 148-in. (3,759 mm)



XH-370M

Rated Cap.: 37,000-lbs. (16,783 kg)
Load Center: 48-in. (1,219 mm)
Wheelbase: 143-in. (3,683 mm)



XH-400L

Rated Cap.: 40,000-lbs. (18,144 kg)
Load Center: 48-in. (1,219 mm)
Wheelbase: 155-in. (3,937 mm)

PNEUMATIC TIRE: 48" Load Center



XH-550M

Rated Cap.: 55,000-lbs. (24,948 kg)
Load Center: 48-in. (1,219 mm)
Wheelbase: 170-in. (4,318 mm)



X-650L

Rated Cap.: 65,000-lbs. (29,483 kg)
Load Center: 48-in. (1,219 mm)
Wheelbase: 180-in. (4,572 mm)



X-700L

Rated Cap.: 70,000-lbs. (31,751 kg)
Load Center: 48-in. (1,219 mm)
Wheelbase: 190-in. (4,826 mm)

LARGE CAPACITY: 48" Load Center



X-800S & 900S

X-800S Rated Cap.: 80,000-lbs. (36,287 kg)
X-900S Rated Cap.: 90,000-lbs. (40,823 kg)
Load Center: 48-in. (1,219 mm)
Wheelbase: 195-in. (4,953 mm)



X-900M

Rated Cap.: 90,000-lbs. (40,824 kg)
Load Center: 48-in. (1,219 mm)
Wheelbase: 215-in. (5,461 mm)



X-800L & 925L

X-800L Rated Cap.: 80,000-lbs. (36,287 kg)
X-925L Rated Cap.: 92,500-lbs. (41,957 kg)
Load Center: 48-in. (1,219 mm)
Wheelbase: 225-in. (5,715 mm)



XH-925L

Rated Cap.: 92,500-lbs. (41,957 kg)
Load Center: 48-in. (1,219 mm)
Wheelbase: 225-in. (5,715 mm)

LARGE CAPACITY: 48" & 50" Load Center



X-1100

Rated Cap.: 110,000-lbs. (49,896 kg)
Load Center: 48-in. (1,219 mm)
Wheelbase: 257-in. (6,528 mm)



X-1200L

Rated Cap.: 120,000-lbs. (54,432 kg)
Load Center: 50-in. (1,270 mm)
Wheelbase: 310-in. (7,874 mm)



X-1250

Rated Cap.: 125,000-lbs. (56,699 kg)
Load Center: 48-in. (1,219 mm)
Wheelbase: 288-in. (7,315 mm)

CONTAINER HANDLER: Empty



XEC-150LE

Rated Capacity: 15,000-lbs. (6,804 kg)
Load Center: 100-in. (2,540 mm)
Wheelbase: 138-in. (3,505 mm)

CONTAINER HANDLERS: Empty



XEC-155/6

Rated Cap. for 9.5-ft. (2.9 m) High Containers:
15,000-lbs. (6,804 kg) / 5-high Stacking
Rated Cap. for 8.5-ft. (2.6 m) High Containers:
15,000-lbs. (6,804 kg) / 6-high Stacking
Load Center: 100-in. (2,540 mm)
Wheelbase: 150-in. (3,810 mm)



XEC-205/6

Rated Cap. for 9.5-ft. (2.9 m) High Containers:
20,000-lbs. (9,072 kg) / 5-high Stacking
Rated Cap. for 8.5-ft. (2.6 m) High Containers:
20,000-lbs. (9,072 kg) / 6-high Stacking
Load Center: 103-in. (2,616 mm)
Wheelbase: 180-in. (4,572 mm)



XEC-206/7

Rated Cap. for 9.5-ft. (2.9 m) High Containers:
20,000-lbs. (9,072 kg) / 6-high Stacking
Rated Cap. for 8.5-ft. (2.6 m) High Containers:
20,000-lbs. (9,072 kg) / 7-high Stacking
Load Center: 103-in. (2,616 mm)
Wheelbase: 180-in. (4,572 mm)



XEC-206/8

Rated Cap. for 9.5-ft. (2.9 m) High Containers:
20,000-lbs. (9,072 kg) / 7-high Stacking
Rated Cap. for 8.5-ft. (2.6 m) High Containers:
20,000-lbs. (9,072 kg) / 8-high Stacking
Load Center: 103-in. (2,616 mm)
Wheelbase: 180-in. (4,572 mm)

CONTAINER HANDLERS: Loaded



XLC-975

Rated Cap. at 97-in. (2,464 mm) Center of Load
90,000-lbs. (40,824 kg) / 2-high Stacking
80,000-lbs. (36,288 kg) / 5-high Stacking
Rated Cap. at 106-in. (2,692 mm) Center of Load
82,000-lbs. (37,195 kg) / 2-high Stacking
75,000-lbs. (34,020 kg) / 5-high Stacking
Wheelbase: 236-in. (5,994 mm)



XLC-976

Rated Cap. at 97-in. (2,464 mm) Center of Load
90,000-lbs. (40,824 kg) / 2-high Stacking
80,000-lbs. (36,288 kg) / 6-high Stacking
Rated Cap. at 106-in. (2,692 mm) Center of Load
82,000-lbs. (37,195 kg) / 2-high Stacking
75,000-lbs. (34,020 kg) / 6-high Stacking
Wheelbase: 236-in. (5,994 mm)



For Exclusive Distribution Only

XLC-974

Rated Cap. at 97-in. (2,464 mm) Center of Load
90,000-lbs. (40,824 kg) / 2-high Stacking
85,000-lbs. (38,555 kg) / 3 and 4-high Stacking
Rated Cap. at 106-in. (2,692 mm) Center of Load
82,000-lbs. (37,195 kg) / 2-high Stacking
80,000-lbs. (36,287 kg) / 3 and 4-high Stacking
Wheelbase: 236-in. (5,994 mm)



For Exclusive Distribution Only

XTCP-900

Rated Cap. at 97-in. (2,464 mm) Center of Load
90,000-lbs. (40,824 kg) / 2-high Stacking
80,000-lbs. (36,288 kg) / 6-high Stacking
Rated Cap. at 106-in. (2,692 mm) Center of Load
82,000-lbs. (37,195 kg) / 2-high Stacking
75,000-lbs. (34,020 kg) / 6-high Stacking
Wheelbase: 236-in. (5,994 mm)

REACHSTACKERS:



XRS-9972

Rated Cont. Cap.: 99,000-lbs. (45 t)
 First Row / 4-high Stacking 9.5-ft. (2.9 m)
 Rated Cont. Cap.: 90,400-lbs. (41 t)
 First Row / 5-high Stacking 9.5-ft. (2.9 m)
 Wheelbase: 258-in. (6,550 mm)



For Exclusive Distribution Only

XRS-9985

ISO/WTP Rated Cap.: 99,000-lbs. (45 t)
 First Row / 4-high Stacking 9.5-ft. (2.9 m)
 ISO/WTP Rated Cap.: 90,400-lbs. (41 t)
 First Row / 5-high Stacking 9.5-ft. (2.9 m)
 Wheelbase: 280-in. (7,112 mm)

ROLL-ON ROLL-OFF: (RORO)



X-620RR

Rated Cap.: 62,000-lbs. (28,123 kg)
 Load Center: 48-in. (1,219 mm)
 Wheelbase: 167-in. (4,242 mm)



X-720RR

Rated Cap.: 72,000-lbs. (32,659 kg)
 Load Center: 48-in. (1,219 mm)
 Wheelbase: 185-in. (4,699 mm)

REMOVABLE COUNTERWEIGHT: (CTRWT)



XH-400RC

Rated Cap.: 40,000-lbs. (18,144 kg)
Counterweight: TBA
Transport Weight w/o CTRWT: TBA
Load Center: 48-in. (1,219 mm)
Wheelbase: 155-in. (3,937 mm)



X-550RC

Rated Capacity at 36-in (915 mm) Load Center
55,000-lbs (25,000 kg)
Rated Capacity at 48-in (1,220 mm) Load Center
48,000-lbs (21,800 kg)
Counterweight: 30,000-lbs (13,608 kg)
Transport Weight w/o CTRWT: 46,000-lbs (20,866 kg)
Wheelbase: 144-in. (3,658 mm)



X-925RC

Rated Capacity: 92,500-lbs. (41,958 kg)
Counterweight: 40,000-lbs. (18,144 kg)
Transport Weight w/o CTRWT: 84,000-lbs. (38,102 kg)
Load Center: 48-in. (1,219 mm)
Wheelbase: 225-in. (5,715 mm)



X-1000RC

Rated Capacity: 100,000-lbs. (45,454.5 kg)
Counterweight: 45,000-lbs. (20,412 kg)
Transport Weight w/o CTRWT: 95,000-lbs. (43,091 kg)
Load Center: 36-in. (914.4 mm)
Wheelbase: 195-in. (4,953 mm)

CUSHION TIRE:

See Product Specification Sheets for Alternate Load Centers & Rated Capacities for the Models Below.



XC-180S, 200S & 220S

XC-180S Rated Cap.: 18,000-lbs. (8,165 kg)
 XC-200S Rated Cap.: 20,000-lbs. (9,072 kg)
 XC-220S Rated Cap.: 22,000-lbs. (9,979 kg)
 Load Center: 24-in. (610 mm)
 Wheelbase: 80-in. (2,032 mm)
 (SL models have shorter overall height of 88")



XC-250M & 200M

XC-250M Rated Cap.: 25,000-lbs. (11,340 kg)
 XC-300M Rated Cap.: 30,000-lbs. (13,608 kg)
 Load Center: 24-in. (610 mm)
 Wheelbase: 88-in. (2,235 mm)
 (ML models have shorter overall height of 88")



XC-350L

Rated Cap.: 35,000-lbs. (15,876 kg)
 Load Center: 24-in. (610 mm)
 Wheelbase: 98-in. (2,489 mm)



XHC-250S & 300S

XHC-250S Rated Cap. 25,000-lbs. (11,340 kg)
 XHC-300S Rated Cap. 30,000-lbs. (13,608 kg)
 Load Center: 24-in. (610 mm)
 Wheelbase: 94-in. (2,388 mm)

CUSHION TIRE:



HXC-400L

Rated Cap.: 40,000-lbs. (18,144 kg)
Load Center: 30-in. (762 mm)
Wheelbase: 110-in. (2,794 mm)



HXC-500L

Rated Cap.: 50,000-lbs. (22,680 kg)
Load Center: 30-in. (762 mm)
Wheelbase: 110-in. (2,794 mm)



HXC-600L

Rated Cap.: 60,000-lbs. (27,216 kg)
Load Center: 36-in. (914 mm)
Wheelbase: 125-in. (3,175 mm)



HXCS-800

Rated Cap.: 80,000-lbs. (36,287 kg)
Load Center: 36-in. (914 mm)
Wheelbase: 130-in. (3,302 mm)

LOG STACKER:



XLS-1000

Rated Cap.: 100,000-lbs. (45,360 kg)
Load Center: 48-in. (1,219 mm)
Wheelbase: 288-in. (7,315 mm)

SPECIALTY TRUCKS:



TTX-200

Rated Drawbar Pull: 20,000-lbs. (89 kN)
Wheelbase: 95-in. (2,413 mm)



PTX-500

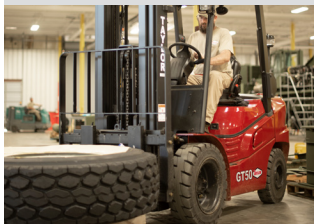
Rated Cap.: 55,000-lbs. (24,948 kg)



X-4030 RIGGER

X-4030 Rated Cap.: 30,000-lbs. (13,608 kg)
Rigger Rated Cap.: 40,000-lbs. (18,144 kg)
Up to 48" of lift, if traveling at less than 1mph
Load Center: 36-in. (914 mm)
Wheelbase: 132-in. (3,353 mm)

GT TRUCKS: 24" Load Center



GT40 & 50

| | |
|-------------------|---------------------|
| GT-40 Rated Cap.: | 4000 lbs (1,814 kg) |
| GT-50 Rated Cap.: | 5000 lbs (2,268 kg) |
| Load Center: | 24 in. (610 mm) |
| Wheelbase: | 63.8 in. (1,620 mm) |



GT60 & 66

| | |
|-------------------|---------------------|
| GT-60 Rated Cap.: | 6000 lbs (2,722 kg) |
| GT-66 Rated Cap.: | 6600 lbs (2,994 kg) |
| Load Center: | 24 in. (610 mm) |
| Wheelbase: | 66.9 in. (1,699 mm) |



GT80 & 90

| | |
|-------------------|-----------------------|
| GT-80 Rated Cap.: | 8,000-lbs. (4,000 kg) |
| GT-90 Rated Cap.: | 9,000-lbs. (4,500 kg) |
| Load Center: | 24-in. (600 mm) |
| Wheelbase: | 76.8-in. (1,950 mm) |



GT-100, 110 & 120

| | |
|--------------------|----------------------|
| GT-100 Rated Cap.: | 10000 lbs (4,536 kg) |
| GT-110 Rated Cap.: | 11000 lbs (4,990 kg) |
| GT-120 Rated Cap.: | 12000 lbs (5,443 kg) |
| Load Center: | 24 in. (610 mm) |
| Wheelbase: | 82.7 in. (2,100 mm) |



GT-135, 155 & 165

| | |
|--------------------|------------------------|
| GT-135 Rated Cap.: | 13,500-lbs. (6,000 kg) |
| GT-155 Rated Cap.: | 15,500-lbs. (7,000 kg) |
| GT-165 Rated Cap.: | 16,500-lbs. (7,500 kg) |
| Load Center: | 24-in. (600 mm) |
| Wheelbase: | 88.6-in. (2,250 mm) |



GT-180

| | |
|--------------------|------------------------|
| GT-180 Rated Cap.: | 18,000-lbs. (8,000 kg) |
| Load Center: | 24-in. (600 mm) |
| Wheelbase: | 98.4-in. (2,500 mm) |

WHEEL LOADERS:



T-1023

Tipping Loads/Straight: 27,679 lbs (12,555 Kg)
Tipping Loads/Full Turn: 23,416 lbs (10,621 Kg)
Max. Hinge Pin Height: 155 in. (3937 mm)
Wheelbase: 120 in. (3048 mm)



T-1025

Tipping Loads/Straight: 32,046 lbs (14,536 Kg)
Tipping Loads/Full Turn: 25,354 lbs (11,500 Kg)
Max. Hinge Pin Height: 158 in. (4013 mm)
Wheelbase: 130.0 in. (3302 mm)



T-1035

Tipping Loads/Straight: 42,645 lbs (19,343 Kg)
Tipping Loads/Full Turn: 35,455 lbs (16,082 Kg)
Max. Hinge Pin Height: 171 in. (4343 mm)
Wheelbase: 140.0 in. (3556 mm)



T-1045

Tipping Loads/Straight: 53,295 lbs (24,174 Kg)
Tipping Loads/Full Turn: 45,645 lbs (20,704 Kg)
Max. Hinge Pin Height: 180 in. (4572 mm)
Wheelbase: 146.0 in. (3708 mm)



“Offering Leasing Solutions for Industrial Equipment”

Taylor Leasing Corporation, a subsidiary of The Taylor Group of Companies, provides competitive finance and lease solutions for your Taylor equipment material handling needs. Our mission is to be the preeminent financial service provider to our global customer base, delivering the highest quality products and services. Taylor Leasing can provide incentives and opportunities beyond the reach of third party finance companies.

Our goal is to structure a financial product that improves your profit with reduced operating cost by increasing up-time and offering a wide range of financial products to fit the specific needs of your business. Taylor Leasing offers over 100 different financial structures within the main product categories of

- **Operating Lease** - A financial choice which provides use of equipment for extended period of time with a low monthly operating cost.
- **Finance Lease** - This type of lease offers flexibility in payments with equipment ownership options at the end of the lease term.
- **Fleet Management** - Your needs and goals are always evaluated carefully before providing you with a custom fleet leasing solution. We only include fleet management services (including maintenance solutions detailed below) that help your fleet function more efficiently.
- **Fleet Maintenance** - We offer tailored fleet maintenance solutions, that range from periodic service and emergency repairs to full on site personnel. Taylor Fleet Maintenance Programs assist in budgeting, while helping to eliminate unpredictable expenses and allowing you to focus on your actual business.

Taylor Leasing & Rental
3690 North Church Avenue
Louisville, MS 39339

Stephen Arnett
Email: sarnett@taylorbigred.com
Phone: (662) 773-3421 Ext. 400
Fax: (662) 773-9146

www.taylorleasingandrental.com



Your #1 Source for Genuine Taylor Parts & Forklift Service

Sudden Service, Inc. provides exclusive worldwide distribution of Genuine Taylor OEM parts and forklift service for equipment designed, manufactured, and marketed by Taylor Machine Works, Inc. Backed by a network of parts and service centers, nationwide dealer support organizations, and factory trained service technicians, SSI is committed to providing the best aftermarket support in the industry.

Sudden Service also offers training seminars for its service technicians on a regular basis, ensuring the best possible service to Taylor Machine Works' customers.

With major component parts from Cummins®, AxleTech™, International®, Kessler®, and Dana®, to name a few, Sudden Service will help you keep your Taylor equipment up and running. Expect courteous, efficient assistance and expedient replacement parts shipments from our staff of trained sales representatives.

When Failure Is Not An Option...
Use Only Genuine Taylor Parts.



Genuine Taylor Dealers understand the need for Genuine Taylor Parts.

Sudden Service, Inc. has its own Distribution & Operation Center (DOC) complete with a fully equipped fabrication shop as well as a fully stocked warehouse serving all Taylor service parts.

OEM Parts Support:

You Can Depend On Big Red® is a personal and collective commitment from the Taylor “Big Red” Team to every customer. Customer needs and expectations are priorities for Taylor engineering, manufacturing, marketing, and service organizations.

Sudden Service, Inc.® and our worldwide Taylor dealer network are ready to respond to your requests for support requirements twenty-four hours a day, seven days a week!

For more information or to find your nearest service center visit:

www.taylorsuddenservice.com

Taylor Sudden Service, Inc.
Corporate Office
3637 North Church Avenue
Louisville, MS 39339

Main Phone: (662) 773-8056
After Hours: (662) 312-2986
Parts Fax: (662) 773-9160
Service Fax: (662) 773-9157



Premium Industrial Lift Truck Tires

Taylor Industrial Tires® offers a wide selection of industrial tires to meet the increasing demand of your business. Tires tough enough to be approved by and used on Taylor “BIG RED” Lift Trucks.



If you need assistance in selecting a specific tire for your equipment, contact us:

Taylor Sudden Service, Inc.
Corporate Office
3637 North Church Avenue
Louisville, MS 39339

Phone: (662) 773-8056
Parts Fax: (662) 773-9160
Service Fax: (662) 773-9157
www.taylorsuddenservice.com



Taylor Safety

Taylor Machine Works, Inc. provides many safety materials for use in conjunction with Taylor equipment. It is imperative that not only the operator be familiar with the safety materials, but also that operations directors and other safety officials utilize the safety materials provided to ensure a safe and ergonomically designed work environment. Taylor Machine Works, Inc.'s commitment to building the safest products and providing good safety materials, in conjunction with the employers commitment and responsibility to provide well-trained operators and safe work environments, will result in a Win, Win situation!

Safety Check Video Training Program

The Safety Check Video Training Program consists of 5 modules on 2 high quality DVDs. These DVDs are only available upon request. For more information or to request a copy of the Safety Check Video Training Program DVDs please contact Julia Love at 662-773-3421.

Safety Training

Under the regulations of OSHA and ANSI, it is the responsibility of the employer to assure that those individuals assigned responsibilities in operation of industrial trucks be properly trained. Through the combined efforts of Taylor Machine Works, Inc. and Industrial Training Systems, Inc., you can be assured that your operators are properly trained to complete their assigned tasks. For more information contact:

Industrial Training Systems, Inc.
 P.O. Box 341033
 2838 Stage Center Cove
 Bartlett, TN 38184-1033

Contact: Jim Shephard
 Phone: (901) 382-5507
 Fax: (901) 382-2811
www.shephardsystems.com

VISIONTM

PLUS

POWERED BY **MOBILEYE**[®]

The Next Generation Pedestrian Detection Aid

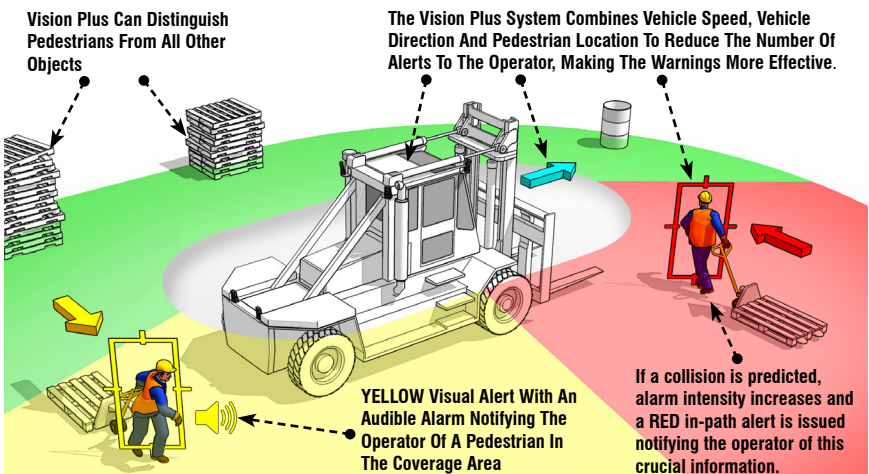
Vision Plus™ provides the operator of mobile equipment with real-time information concerning the location and tracking of pedestrians in the operating area around the equipped vehicle. Mobileye's unique artificial vision technology enables the Vision Plus™ system to ignore non-pedestrian obstacles significantly reducing the number of alarms to the operator and to bystanders. This functionality, unique to the Vision Plus™ system, ensures that only the most important information is provided to the operator. Ergonomic display of information both audibly and visually, industrial grade camera enclosures and hardware, and state of the art sensor-less, tag-less technology combine to provide a pedestrian detection aid that will add to the operator's practice of clearing the area with direct vision.

- Powder Coated For Long Lasting Finish
- O-Ring Sealed Connector
- Rugged Construction, Designed For Use In Industrial Environments
- Cover With Drip Edge To Reduce Water Dripping In Front Of The Camera
- Level 2 Alert
- Audible Alarm With Adjustable Volume
- Enclosure Is Sealed To Withstand Damage From Outdoor Elements
- Enclosure Is Cast Aluminum With Integrated Heat Sink
- Led Indicators Provide A Bright Visual Alert To The Operator
- Fully Encapsulated Electronics For Increased Durability

CAN'T FIND A SYSTEM TO FIT YOUR APPLICATION?

Customizable solutions to meet your unique requirements. Contact your Certified Vision Plus dealer.

www.visionplussafety.com



TAYLOR **TRAK** **PRO**

ADVANCED
FLEET TELEMATICS

SEE YOUR FLEET AT A GLANCE

TaylorTrak Pro® Hardware is integrated into your equipment, interacting with our robust Taylor Integrated Control System (TICS) to ensure your equipment is communicating with you. TaylorTrak Pro® provides access through WIFI or cellular network coverage based on your regional or work-site requirements. It enables comprehensive and flexible remote monitoring, asset tracking, maintenance scheduling and much more.

Contact us to learn more: 662-773-9104 or visit www.taylortrakpro.com

USER-FRIENDLY INTERFACE

- Accurate, up-to-date information available across multiple platforms (desktop, tablet, smart phone)
- Instant status updates on individual pieces of equipment
- Alert notifications sent via SMS text and email to the proper personnel.
- Customizable alert preferences based on the level of information you require.
- Current status of all engine parameters
- Alert notification of critical engine parameters

SCHEDULED MAINTENANCE

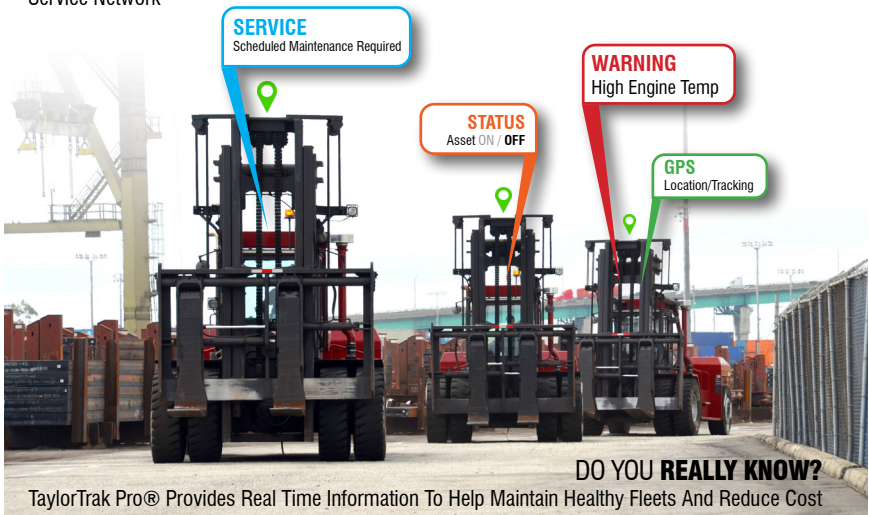
- Plan & Track Maintenance.
- Use recommended Taylor Service Intervals or customize to fit your needs.
- Receive alerts to notify you of approaching "scheduled" maintenance
- Track individual machine and fleet maintenance history
- Easy access to your Local Dealer Service Network

GPS MAPPING & SITE BOUNDARY MANAGEMENT

- Real-time GPS equipment location on easy-to-use maps
- Ability to Geo-fence an area and receive "Breach" alerts
- GPS "Breadcrumbs" - Historical trails of where a piece of equipment has been over customized time-frames
- Easily identify asset locations through color coded GPS map pins

ANALYTICS & REPORTING

- Optimize Work Flow
- Instance Access to Historical Data & Time Based Reporting
- Compare Overall Fleet Performance
- Detailed Performance Data Delivered to Your Fleet Manager





EQUIPMENT SALES - REMANUFACTURING - SUSTAINMENT

Taylor Defense Products provides the U.S. Military, its allies, and the U.S. government with the longest lasting, best supported, and lowest total cost material handling and logistics products. Taylor is one of the largest heavy lift manufacturers in the USA and offers long term capability, capacity, and expertise to the U.S. Military. Taylor actively supports its customers to increase readiness, solve difficult material handling challenges, and do more with less in difficult budgetary times.

To find out more visit us at: www.taylordefenseproducts.com

EQUIPMENT SALES:

- Made in America
- Heavy Duty Material Handling Equipment from 8k-lb. to 125k-lb.
- Lower Total Life Cycle Cost
- Longer Duty Cycles
- Less Down Time
- In-house Engineering Department can Modify C.O.T.S. to Mil-Spec
- Backed by over 90 years of manufacturing experience
- Standby & Mobile Power Generators

REMANUFACTURING:

- SLEP (Service Life Extension Program)
- Zero-Hour/Zero-Mile - Full Mission Capable
- Modernization
- CARC (Chemical Agent Resistant Coating)
- Engine / Transmission Certified Rebuilder
- Obsolescence Solutions
- Obsolete Parts Fabrication
- In-house Technical Publications

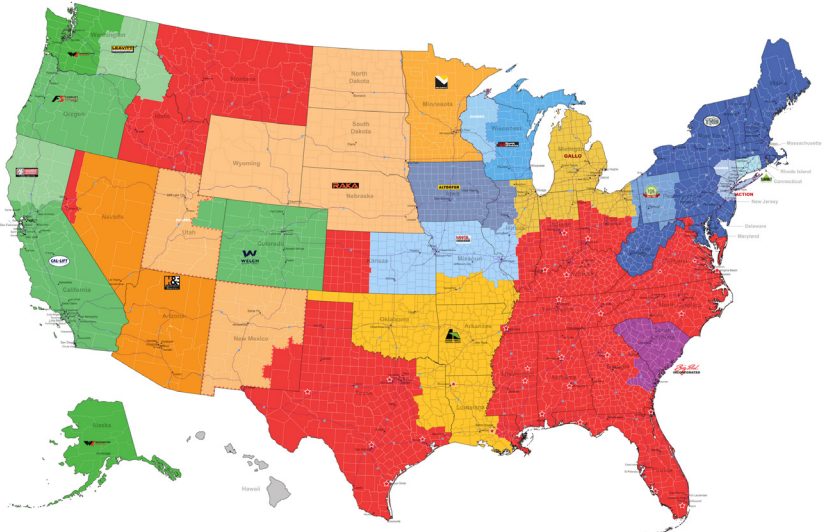
SUSTAINMENT:

- Manufacturing Resources Dedicated Solely to Customer Support
- Parts Fabrication In-house
- Over 35,000 Line Items In Stock
- Nationwide Service Network
- 24 Hour Technical Support
- Training & Service Manuals
- Major Component Parts From Cummins®, Volvo®, AxleTech™, International®, Kessler®, Dana®



Equipment Sales, Parts, Service & Support

CONTACT US AT ONE OF OUR MANY **SUDDEN SERVICE** LOCATIONS



LOUISVILLE, MS - CORP HQ
3637 North Church Ave.
Louisville, MS 39339

Tel: 662-773-8056
Serv. Fax: 662-773-9157

WEST MEMPHIS, AR
614 Hwy 77 North
W. Memphis, AR 72301

Tel: 870-732-4900
Serv. Fax: 870-732-4901

COMFORT, TX
120 Hermann Sons Rd
Comfort, TX 78013

Tel: 830-995-3465
Serv. Fax: 830-995-3466

RICHMOND, VA
8351 Brook Road
Richmond, VA 23227

Tel: 804-266-6200
Serv. Fax: 804-266-9184

PHILADELPHIA, MS -DOC
103 Industrial Park RD
Philadelphia, MS 39350

Tel: 601-650-9600
Serv. Fax: 601-650-9992

GILLETTE, WY
3021 Garman Road
Gillette, WY 82716

Tel: 307-686-3655
Serv. Fax: 307-686-3657

PASADENA, TX
4466 Genoa Red Bluff Rd
Pasadena, TX 77505

Tel: 346-226-0830

FORT MYERS, FL
16120 Lee Road Unit 160
Fort Myers, FL 33912

Tel: 239-789-1864

BESSEMER, AL
1050 Powder Plant RD
Bessemer, AL 35022

Tel: 205-428-7050
Serv. Fax: 205-428-7948

KENNER, LA
151 Palisade Street
Kenner, LA 70062

Tel: 504-273-6904
Serv. Fax: 504-360-2054

ODESSA, TX
4067 West 42nd Street
Odessa, TX 79764

Tel: 432-231-0890
Serv. Fax: 432-231-0889

JACKSONVILLE, FL
1108 North Lane Avenue
Jacksonville, FL 32207

Tel: 904-801-1247

MOBILE, AL
5640 Commerce Blvd, E.
Mobile, AL 36619

Tel: 251-666-2924
Serv. Fax: 251-666-4056

COVINGTON, GA
65 Chamisa Road
Covington, GA 30016

Tel: 770-483-0735
Serv. Fax: 770-483-0738

FORT WORTH, TX
4900 Sun Valley Drive
Fort Worth, TX 76119

Tel: 882-204-0040
Serv. Fax: 817-516-2121

MIAMI, FL
8351 NW 64th Street
Miami, FL 33166

Tel: 305-599-2070
Serv. Fax: 305-599-2611

MONTGOMERY, AL
1121 John Overton DR
Montgomery, AL 36110

Tel: 334-279-6663
Serv. Fax: 334-279-6603

HOPE MILLS, NC
4681 Marracco Drive
Hope Mills, NC 28348

Tel: 910-425-3833
Serv. Fax: 910-425-7449

WILLISTON, ND
4932 Highway 85
Williston, ND 58801

Tel: 701-774-9857
Serv. Fax: 701-774-3717

EVANSVILLE, IN
2727 Eastside Park Rd
Evansville, IN 47715

Tel: 260-306-5341

www.taylorsuddenservice.com



Taylor Machine Works, Inc.
3690 N. Church Ave.
Louisville, MS 39339
www.taylorbigred.com

TMW-BR-PRODLINE-07 (01/31/22)